


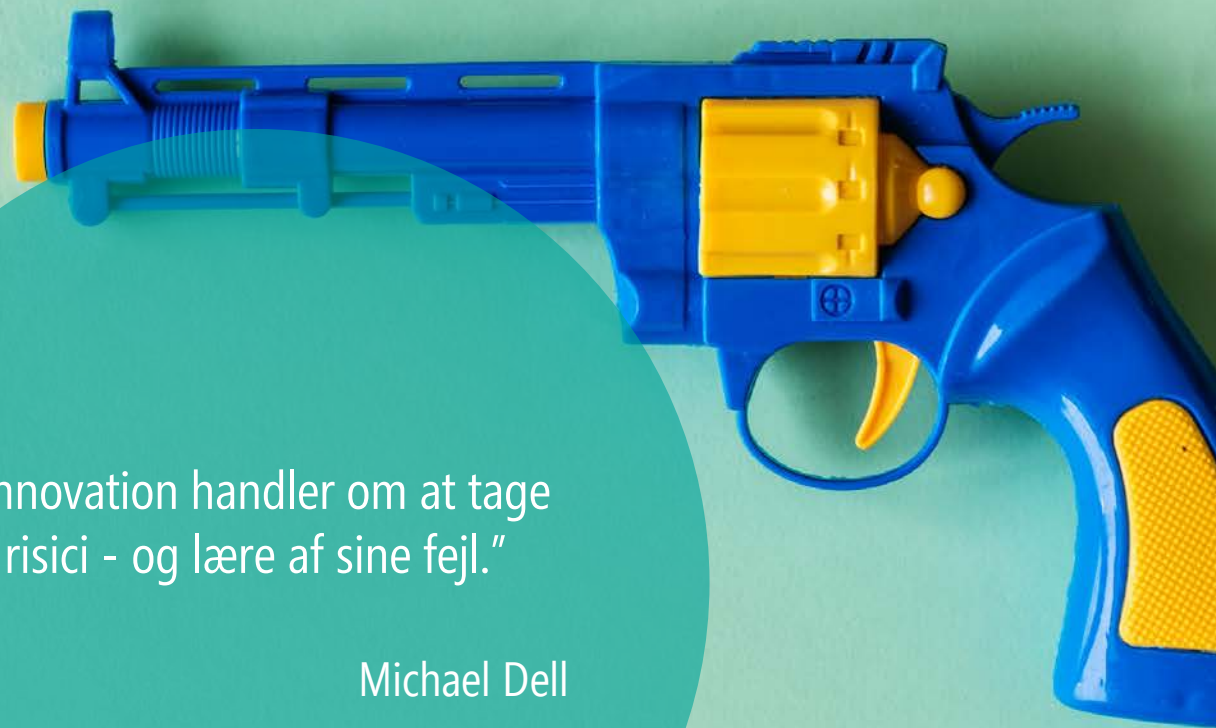
—
DIGITAL INNOVATION
24. APRIL 2019

—
DANSK SELSKAB
FOR LEDELSE I
SUNDHEDSVÆSENET



SYDDANSK
SUNDHEDSINNOVATION

B A H G



"Innovation handler om at tage risici - og lære af sine fejl."

Michael Dell

ENHEDEN FOR
DIGITAL
INNOVATION





VI ER GENNEM DE
SENESTE ÅR BLEVET
FLERE

SUNDHEDS-
TEKNOLOGI

TELESUNDHED

SUNDHEDS-
SAMARBEJDE



FAGLIGE
FÆLLESSKABER

BEMANDING PÅ
TVÆRS

STYRKET
SAMARBEJDS-
KULTUR

A close-up photograph of a silver espresso machine dispensing coffee into two small glass cups on a metal drip tray. The coffee is dark with a thick, golden-brown crema. The machine's spout is positioned directly above the cups. The background is softly blurred, showing the machine's control panel with several buttons. A large black circle is overlaid on the left side of the image, containing the text 'PROJEKT-ORGANISATION' in white, sans-serif capital letters.

PROJEKT-
ORGANISATION

A close-up, slightly blurred photograph of an elderly person's hand using a computer mouse. The hand is positioned on the right side of the frame, with the index finger resting on the mouse button. The mouse is black and sits on a blue and white patterned mousepad. To the left of the mousepad is a white tablet computer, which is open and displaying a webpage with text and a green button. The desk is cluttered with various items, including a pen holder with several pens, a small globe, and other office supplies. The background is out of focus, showing a wooden desk and a chair. A teal circular graphic is overlaid in the top right corner, containing the text 'KOL I SYD' in white capital letters.

KOL I SYD

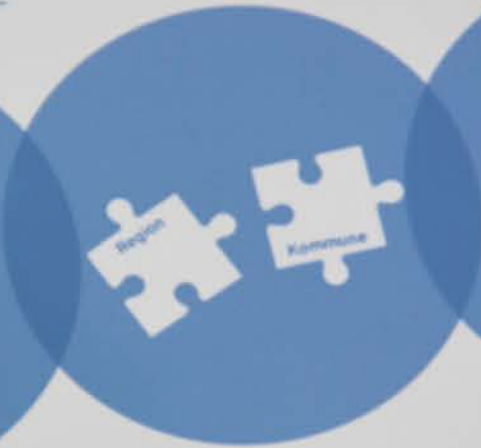


HJEMME-
MONITORERING AF
GRAVIDE MED
KOMPLIKATIONER

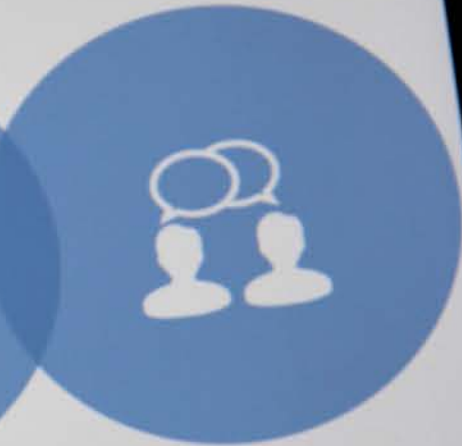
GENOPTRÆN|DK



Virtuel genoptræningsportal



Tværasektoriel platform



Terapeut-borger dialog

Login

Username

Password

Log på

GENOPTRÆN.DK

Vil du have mere information omkring Genoptræn.dk

klik på ikonet ->

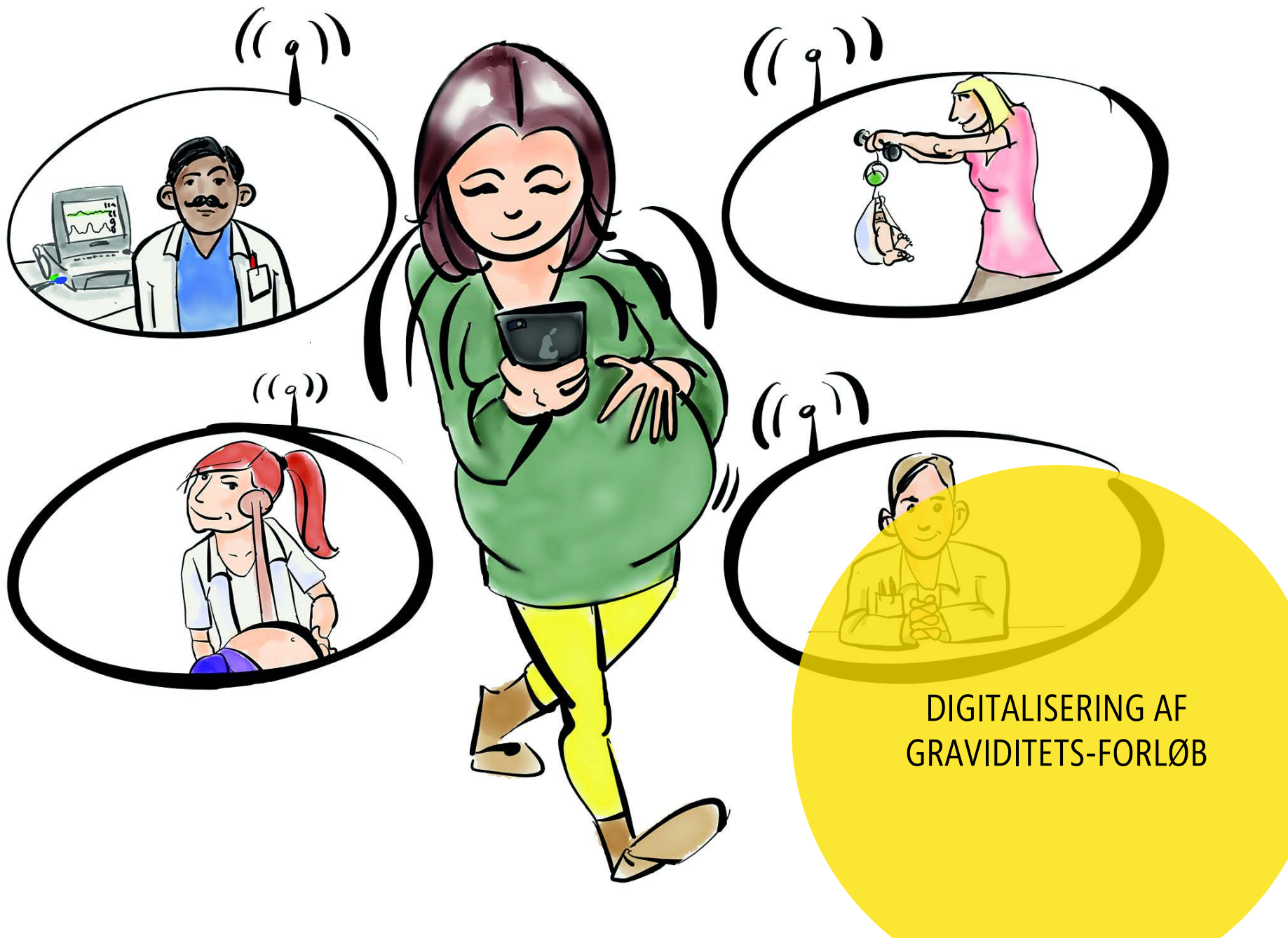




DIGITAL PATIENT-
UDDANNELSE



UDBREDELSE
AF VIDEO TIL
PRAKSIS



DIGITALISERING AF
GRAVIDITETS-FORLØB



GERI-KUFFERT-
PROJEKTET



The **Silver Economy Awards**

Powered by SEED

First European Silver Economy Awards Ceremony

Finalist category: Public Authority

Title: The Generic Telemedicine Platform- Bridging sectors with technology

Organisation: The Health Innovation Centre of Southern Denmark

Country: Denmark

Presented by: Anne Friis Hansen

Committee of the Regions

Brussels

3rd May 2018

#SilverCeremony2018

This project has received funding from the European Union's Horizon 2020 research and innovation programme under grant agreement No 727625.





KONSULENTHUS

A pair of hands is shown from a low angle, cupping a small amount of dark, rich soil. A young green seedling with two leaves and a thin stem grows out of the soil. The background is dark and out of focus. A large, semi-transparent teal circle is overlaid on the left side of the image, containing the text 'VIDENS CENTER' in white, uppercase letters.

VIDENS CENTER



HACKATHON

A close-up photograph of a person's hands working on a server rack. The person is wearing a white t-shirt and is focused on connecting or organizing a dense array of white and blue network cables. The server rack is filled with various components, including network switches and patch panels. A large, semi-transparent yellow circle is overlaid on the right side of the image, containing the word "CONNECTATHON" in a bold, black, sans-serif font. The background is slightly blurred, emphasizing the intricate network setup in the foreground.

CONNECTATHON

COMPLEXATHON

$$v = 2\pi f \quad \beta = \frac{\Delta I_c}{\Delta I_b} \quad v = c/\lambda$$

$$\frac{\sin \alpha}{\sin \beta} = \frac{v_1}{v_2} = \frac{w_2}{w_1} \quad v = \frac{1}{\sqrt{\epsilon \cdot \mu}} = \frac{c}{\sqrt{\epsilon_r \mu_r}}$$

$$= \rho \frac{l}{S}$$

$$= \frac{L_{in}}{T}$$

$$W = \vec{F} \cdot d \cos \alpha$$

$$F_v = \left\{ \frac{F_n}{R} \right.$$

$$x^* T =$$

$$E = mc^2$$

$$F_n = S \cdot \rho \cdot g \quad F_g = \frac{m_1 m_2}{r^2} \quad \gamma = \frac{E_c}{E}$$

GRAVID EVENT FOR SUM

Navn

Konsultationsaftaler

Konsultation

Sted

Dato

Kl.

Konsultation

Sted

Dato

ST 97.001 01/2019
Kommuneforlaget

OFFENTLIG
PRIVAT
INNOVATION





SAMARBEJDE



STRATEGIER

NÆRHEDSFINANSIERING

REDUKTION I ANTAL SYGEHUSFORLØB PR. BORGER

REDUKTION I DRG-VÆRDI PR. KRONIKER MED KOL OG/ELLER DIABETES

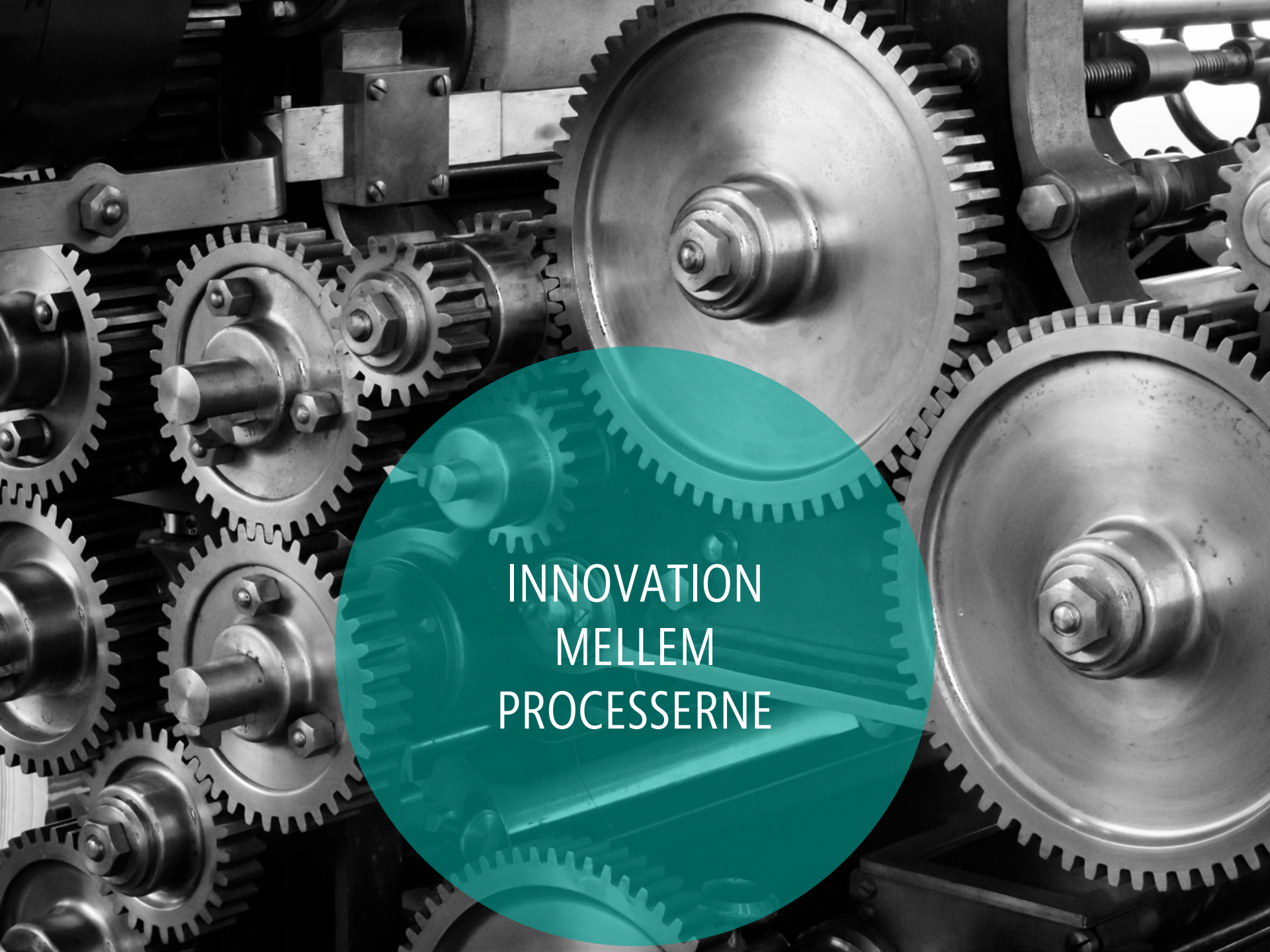
REDUKTION I ANDELEN AF INDLÆGGELSER,
DER FØRER TIL EN AKUT GENINDLÆGGELSE INDEN FOR 30 DAGE

STIGNING I ANDEL AF VIRTUELLE SYGEHUSFORLØB


IMPLEMENTERING AF DIGITALE LØSNINGER TIL SAMMENHÆNG FOR PATIENTEN



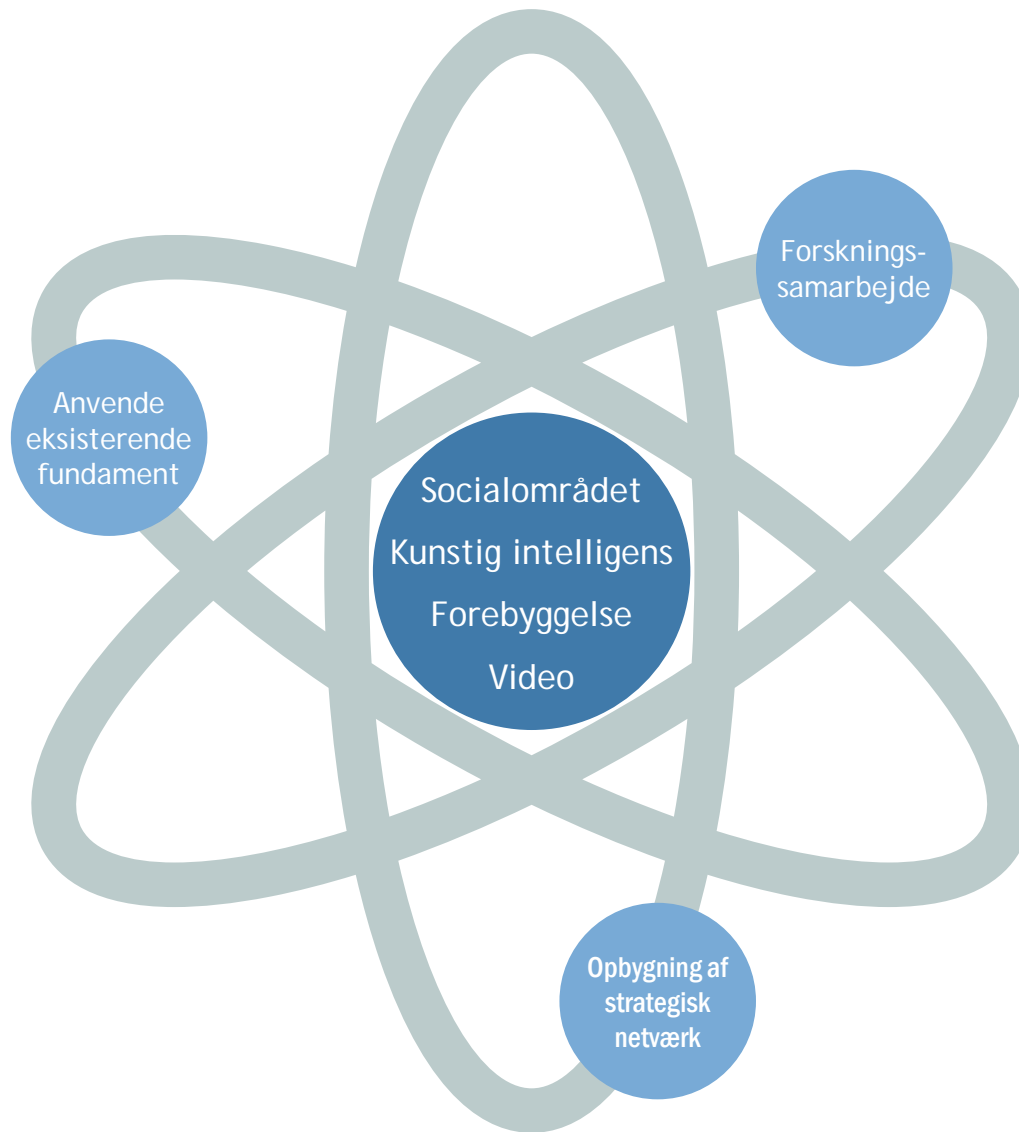
ROADMAPS FOR
STØRRE
IT-PROJEKTER



INNOVATION
MELLEM
PROCESSERNE

A photograph of a ship's anchor and chain on a boat deck. The anchor is white with black tips, and the chain is black. The background shows a blue sea and a rocky coastline under a clear blue sky. A teal circular overlay is on the left side of the image.

FORANKRING I "NORMAL"- SYSTEMET





SOCIALOMRÅDET



KUNSTIG
INTELLIGENS



FOREBYGGELSE



VIDEO



TÆNK STORT, START
SMÅT, SKALER HURTIGT

A top-down view of several people's hands clasped together in a circle, symbolizing teamwork and collaboration. The hands are of various skin tones and are wearing different colored shirts (white, light blue, dark grey). The background is a plain, light-colored wall. A large, dark grey circular graphic is overlaid on the right side of the image.

SAMARBEJDE

TAK FOR
JERES TID

